

## President's Message April 2024



### Spring is Here?

As I write this, I have just finished snowblowing my driveway one last time this season. Notice the optimism? Truth is, Mother Nature sometimes gives us a little more time in March and April to sit by the fire to leaf through seed catalogs or read a few more chapters in that pile of books we put aside for winter. There's time to do one more thing before the siren call of Spring draws us outdoors.

By now, maybe, you've logged into the ORS to sign the Terms and Conditions and logged some volunteer or education hours. But, I'd like to direct you to [Canvas.wisc.edu](https://Canvas.wisc.edu), our one-stop shop for referencing and sharing information about the MG program. Two new features have been added to Onboarding-Lite 2024 which are important, as well as informative, concerning our function as MG volunteers. One module is on *Unintentional Bias* and the other on *Researched Basic Horticulture and Finding Trustworthy Resources*.

As MGVs, we are expected to be aware of how to interact in a positive way with clients, the public, and each other, and to provide information that is evidence based. The two modules tease out subtle details related to both those subjects, about which we should all be aware. Yes, they take some time. They involve videos that might be 5-13 minutes long, but it's not necessary to do either subject in one sitting. Unless you have not done Onboarding-Lite before, you are not required to do the tests, although they help gauge your understanding. Please take a little down time you may have now and review these resources. Let me know if you have any issues getting into Canvas.

Happy Spring!

Chris

March Meeting Minutes p. 2

April Meeting Details p. 3

Project Spotlight of the Month p.4

Educ Offerings for C E p. 5-10

Road Trips p.11

WIMGA Corner p. 12

Project Updates p. 12

Garden Walk p. 13

Spring Plant Sale p.14-15

Fall Plant Sale Buzz p. 16

Calendar of Events p. 16

April Garden Guide p. 17

# March Meeting Minutes

**Wood County Master Gardener Volunteer Assoc.**

**General Membership Meeting**

**March 26, 2024 6:00 pm**

**Alexander House, Port Edwards**

**Program: WCMGVA Reunion & Horticultural Adventures. AWARDS NIGHT!**

Total present: 21 We welcomed 4 new guests to our meeting.

**Business Meeting:** Called to order 6:08 by President Chris Grimes.

**Secretary's Report:** (J. Miller) Review of minutes from Nov. 14, 2023 was without corrections or additions and will be put on file.

**Treasurer's Report:** (F. Marx) Report reviewed and will be put on file. The CD has been renewed on 12/9/23 for 11 months @ 4.91% annual yield.

**Old Business:** None

**New Business:** **WIMGA** Report: (K. Remington) WIMGA Programs for continuing education are recorded and can be watched if you missed them LIVE. They are posted now on the WIMGA website. Chris will create a Garden Walk advertisement to send to WIMGA to include in the newsletter.

**Programs:** The committee consists of Famia Marx, Donna Streiff, Bea Kohl and Karleen Remington. April 23 - program: "Invasives" presented by Matt Wallrath, Outreach Director of Wisconsin First Detector Network (WIFDN). May 28: Carolyn Schulein's garden visit, Marshfield. June 25: Woodland Perennials by Janell Wehr at Chris Grimes garden, Wisconsin Rapids. July 23: Edgewater Sensory Garden Visitation with Karen Shirek/Judy Miller, Port Edwards. August 13: Annual Picnic at Vesper Park. September 24: Allison from Saltwise Wisconsin (winter salt use). October 22: Easy care Houseplants. November 19: Strategies Horticultural Research with Donna Streiff.

**Wood Co. Horticultural Report:** (Janell Wehr) Janell explained her updated position as Wood Co. Horticulturist. She is full time: 30% in Wood County and 70% in Marathon County. Some material resources remain in what was her office. We can reach her office through Karli or Wendy at the main desk. Janell will be holding her first in-person Foundations class to prepare new MGVA in the fall at the Marshfield Library. The class will probably run September 5 – December 5 on Monday evenings from 5:30 pm – 7:30 pm. We will soon have updated info on registration so we can post on our website and distribute to friends by email and at our fundraisers, info booths, and events. Janell has created a new monthly email newspaper called "Can You Dig It?" with information, resources, etc. She will add all WCMGV to her email list.

**Socialization Committee:** This Committee consists of Chris, Lil Schotten, Cathy Shutz, Jim and Diane Nickel.

- **Tea and Tulips** will be held on Sat, April 20 at the WCHMuseum. The program, presented by Janell Wehr, will be "No Mow May-further research" and "Strategies for Pollinators". 9:00 – 11:30
- Greenhouse Roadtrip with lunch stop is planned for Wednesday, May 8.
- Trip to Jurustic Park and Art Gallery is planned for June 11, followed by lunch and a succulent creation class at Urban's Greenhouse.

August and September still being explored. Information will be in the newsletter and by email.

**Garden Walk 2024** - (Lil Schotten) Lil gave updates of progress. AM Brunch for garden hosts, vendors, and entertainers on Sat, April 6. Jan Meyers reported on Raffle baskets, ongoing progress. Diane & Jim showed the quilt that they are donating. It will be displayed at the June 20 Cranberry Fest Material Girls Quilt Show at Assumption HS. Watch newsletter and WCMG posts for updates.

**Spring Plant Sale** – (J. Becker/B. Kohl) Saturday, May 18 at Cathy Schutz's in conjunction with Port Edwards Village Rummage Sale. Set up will be on Friday, May 17. Vegetable seedling plants will be provided by Tender Shoots. Donations of house plants, overwintered natives and root stock are needed. Sale will be simplified because of additional tasks of Garden Walk.

**ORS** – ORS site has been updated and is open for signing of Terms and Conditions and recording of volunteers and CE hours. The Canvas.wisc.edu site has also had new information added to the Onboarding-Lite outline which everyone should review. New learning modules are Unintentional Bias and Researched Basic Horticulture/Finding Trustworthy Resources.

**Photo release** – tabled

**Project Spotlight** – Each month, selected members will share their Project progress and describe duties, goals, and new information. This will also be shared in the newsletter. Members will be asked ahead of time to report. Diane and Jim reported on their service to the Nekoosa DowntownPlanters Project.

**Awards:** Eleven members were recognized for milestone volunteer hours through 2023. Congratulations and Thank You to all!

- 150 Hours - Lil Schotten, Cathy Schutz
- 250 Hours - Lil Schotten
- 500 Hours – Deb Rokke
- 750 Hours – Jill Becker, Diane Nickel, Jim Nickel
- 1000 Hours – Jill Becker
- 1500 Hours – Chris Grimes
- 2000 Hours – Bea Kohl, Judy Miller, Donna Streiff

5000 Hours – Barb Herreid

**Adjournment:** M/S/P to adjourn at 7:25. Snacks followed.

**Next meeting:** Tuesday, April 23, 2024 – 6:00 Program : "Invasives" with Matt Wallrath at the Chestnut Center for the Arts, Marshfield

Respectfully submitted,  
Judy Miller, Secretary

*Happy  
Easter*

# Project Spotlight of the Month

## Nekoosa Downtown Planters

For the last three years the citizens and visitors of the city of Nekoosa have enjoyed a new urban landscape with the addition of flowers planted and tended by Jim and Diane Nickel. Twenty one planters decorate Market Street and continue to Nekoosa Senior Center.

Jim and Diane consider many factors in planning these container gardens, which differ in size and shape. Plant decisions are made based on scale, drought tolerance, root needs, texture, plant availability, and hardiness to withstand variations in the weather. Of course, the design standard of incorporating a “chiller, thriller, and spiller” is used. They garnered much success and praise from the public over the last two years with their use of tall, structured Papyrus plants, paired with the color impact of large-flowered wave petunias in pink or florescent yellow, depending on color palette of the year. Purple gomphrena and purple sweet potato vine fill complementary roles. They re-evaluate their color scheme every year to keep the public interested .Of course, the deer also love their planters, especially those on the west side of town, which are closer to the woods.

Planting soil is amended with compost, slow release fertilizer and nitrogen. They found a monthly application of 17-17-17 fertilizer, a three times a week watering schedule, and mulch really made their containers happy. Because it is an urban setting, their weekly weed and watering sessions also include litter removal (maybe depending on how close the planter is to a bar??)

Jim and Diane would welcome help in planting and watering this garden. A planting date has not been set yet and depends on the weather but watch this space in the newsletter, for email announcements, or call the Nickels directly. (Contact information on our Members Only page on the website). Thanks to Jim and Diane for their creativity, hard work, and inspiration for the citizens of Nekoosa!



# April Meeting Information

## INVASIVE SPECIES

With Matt Wallrath

Coordinator of Wisconsin First Detector Network

UW-Madison

at

Chestnut Center for the Arts

208 South Chestnut Avenue, Marshfield

6 to 9 PM, Tuesday, April 23, 2024

Zoom or in person

Matt Wallrath, a UW-Madison outreach specialist, is the coordinator of the Wisconsin First Detector Network. During his Zoom presentation he will share information about the network.....what it is, who is involved and how it can be of value to us in our horticulture activities. He will give us a “heads up” on current invasives that we might encounter in our personal gardens and horticulture projects as well as alert us to new invasives that have relocated from other areas of the country or are being encouraged by climate change. Be ready with your questions or to share your encounters with these unwelcome residents.

### New Venue

We will be meeting at the **Chestnut Center for the Arts** in Marshfield, the former First Presbyterian Church. You will see a sign on West 3<sup>rd</sup> Street directing you to the entrance. Just inside, turn left to go up the stairs.

At the top of the stairs, turn right and go straight ahead to the other side of the building. We will be meeting in the Fireplace Room.

**Directions from Wisconsin Rapids via Hwy 186 through Vesper and Arpin:** From Hwy 186 turn left onto Hwy 10. Take exit #183 into Marshfield and onto Veterans Parkway. Follow the parkway (next to the railroad tracks) crossing Central Avenue (downtown) and then turning left (south) at the next set of lights onto Chestnut Avenue. Drive 2 blocks and turn right onto West 3<sup>rd</sup> Street. Make an immediate right into the Chestnut Center parking lot on the west side of the building.

**Directions from Pittsville via 73 and 80.** Go through the 3 roundabouts into Marshfield onto Central Avenue. Follow Central Avenue through the business area to Veterans Parkway. Turn left onto the parkway and then left at Chestnut Avenue. Drive 2 blocks and turn right onto West 3<sup>rd</sup> Street. Make an immediate right into the Chestnut Center parking lot on the west side of the building

### Future Programs

May 28: Carolyn Schulein’s garden, Marshfield

June: 25: Shade Gardening including Natives with Janell Wehr at Chris Grimes’ garden, WR

July 23: Edgewater MG project with Judy Miller in Port Edwards

August 13: Potluck Picnic with local horticulture experts at Vesper Park, Vesper



# Education Opportunities for C. E. Hours

## **UW Extension Horticulture** [Wisconsin Horticulture – Division of Extension](#)

**Understanding the Emerald Ash Borer: From Identification to Action** April 1 1-2 pm on Zoom  
Register: [https://uwmadison.zoom.us/webinar/register/WN\\_qEt84JRuSASa8qc9B1DybA](https://uwmadison.zoom.us/webinar/register/WN_qEt84JRuSASa8qc9B1DybA)  
[https://uwmadison.zoom.us/webinar/register/WN\\_qEt84JRuSASa8qc9B1DybA#/registration](https://uwmadison.zoom.us/webinar/register/WN_qEt84JRuSASa8qc9B1DybA#/registration)

**What's the Deal with No Mow May?** April 3 12 noon—1pm on Zoom Register: [Webinar Registration - Zoom](#)

**Establishing a Bee Lawn — Current Research and Practical Techniques** April 25 Noon-1pm on Zoom [Webinar Registration - Zoom](#)

**From the Plant Disease Diagnostic Clinic** Clinic will sponsor a Zoom presentation on a plant disease-related topic. To register for one or more talks, go to [2024 PDDC Monthly Disease Talk Registration Form | Plant Disease Diagnostics Clinic \(wisc.edu\)](#)

**Preventing Plant Disease Problems During the Landscape Design Process** April 24 6:30 – 8:30pm via Zoom Registration [2024 PDDC Monthly Disease Talk Registration Form | Plant Disease Diagnostics Clinic \(wisc.edu\)](#)

### **New Monthly Program from the PDDC!!!! Ask the Experts**

Join our monthly online programs in 2024 for an opportunity to connect with plant health experts from the UW-Madison Division of Extension. Each session, held on Monday afternoons from 1:00-2:00 pm, is your chance to ask questions about your trees and shrubs, garden vegetables and ornamentals, and lawn. Whether it's about plant diseases, pesky insects, or the selection and general care of plants in and around your home, our panel of seasoned experts will provide you with insightful answers. Don't miss out on this opportunity to cultivate your knowledge and keep your plants thriving. April 22 registration link: [https://uwmadison.zoom.us/webinar/register/3717004654896/WN\\_eIRvIUdITFSrswrwekjnhw#/registration](https://uwmadison.zoom.us/webinar/register/3717004654896/WN_eIRvIUdITFSrswrwekjnhw#/registration)

## **Melinda Myers website**

**Container Gardening Throughout the Year** April 10 6:30pm

Use container gardens to boost the color and seasonal interest in any size landscape, garden, balcony, or deck. With your budget in mind, we will explore attractive combinations of trees, shrubs, flowers, edible plants, and those that attract pollinators. Plus, you'll learn strategies for extending your enjoyment year-round by transforming all or a portion of the container planting with the changing seasons. [Webinar Registration - Zoom](#)

**Seven Steps to Managing Water Where It Falls in Your Yard** April 11 6:30pm

Learn how to manage water in your backyard to support the plants in your landscape and help re-

# Education Opportunities for C. E. Hours



duce the risk of sewer backups, basement flooding, and sewer overflows. Develop a strategy that works best for you by implementing some or all of these seven steps. These include improving the soil, maintaining a healthy landscape, installing rain barrels, creating rain gardens, planting trees, adding native plants to the landscape, and growing a water-friendly lawn. [Webinar Registration - Zoom](#)

## **Ornamental Fruits and Vegetables** May 1 6:30pm

Increase the nutritional value and beauty of your landscape by incorporating attractive fruits and vegetables into your landscape, garden beds, and containers. Growing varieties that are both ornamental and productive increases the opportunities for creating a beautiful space right outside your door. We will look at new and proven fruit and vegetable varieties suited to both gardens and containers. [Webinar Registration - Zoom](#)

For more of Melinda Myers, on the home page, scroll down to the orange button on the right side of the screen “Watch on-Demand Webinars”. Click on it and you will find a long list of her programs that have been recorded in the past year or two.

## **Garden Guru**

**April 15 Planning and Planting Your Garden** 6pm Live at the library or via Zoom.

To enter the online You Tube presentation, go to Everett Roehl Memorial Public Library web page and click on Adults, then Programs, scroll down to Garden Guru and click on “Online”. That will take you to the You Tube location of the program. Or use this URL : <https://www.youtube.com/@ermplibrary2715>



**WIMGA PROGRAM** **Adaptive Gardening** April 11 More info to follow from WIMGA

**Clark County Spring Garden Conference** April 6 9:30am Clark County Courthouse Auditorium 517 Court St. Neillsville WI FREE Enter on 6th St.

# Education Opportunities for C. E. Hours

April 20



## Tea & Tulips 2024

You're invited to join us as we start the gardening season with a relaxing morning at South Wood County Historical Museum overlooking the Wisconsin River

- Meet and share with other committed community garden group members
- Refreshments in the beautiful, historic home of pioneers Issac & Charlotte Witter
- Optional Museum Garden Tour with the Museum Garden Team
- Tour the Museum at your leisure
- **Presentation by Wood County Horticultural Educator, Janell Wehr**  
**"What's Up with No-Mow May: Supporting Pollinators Throughout the Year"**

Janell will discuss new research on the issue of No Mow May and which garden management techniques can benefit pollinators the most.

**Saturday, April 20, 2024**  
**9 am-11:30 am**  
**Presentation at 10am**

**South Wood County Historical Museum**  
**540 3rd Street South**  
**Wisconsin Rapids**

Bring a Friend!



All events will be led by Master Gardener Educators & take place at the Lester Public Library of Rome

# ROME GARDEN CLUB 2024 EVENTS



APRIL 24TH, 2024  
9:30-11AM

## CUTTING BACK & DIVIDING NATIVE GRASSES

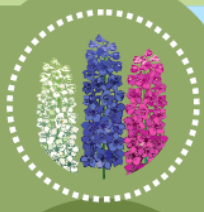
Discussion | Hands-On



MAY 8TH, 2024  
9:30-11:30AM

## SUSTAINABLE LANDSCAPE DESIGN

Discussion | Led by Becky Gutzman, Retired UW-Extension Educator



JUNE 12TH, 2024  
9:30-11AM

## DIVIDING & SHARING PERENNIALS

Discussion | Group Share | Hands-On | Led by Jennifer Fane



JULY 10TH, 2024  
9:30-11:30AM

## MAKE & TAKE STEPPING STONES

Hands-On | Registration Required | Led by Laurie Francis & Robert Stoldt



AUG. 14TH, 2024  
9:30-11AM

## NATIVE SHADE PLANTS

Discussion | Led by Barb Herreid



SEPT. 11TH, 2024  
9:30-11:30AM

## LAWN CARE FOR SANDY SOILS

Presentation | Discussion | Led by Janelle Wehr, UW-Extension Educator



OCT. 9TH, 2024  
9:30-11AM

## GROWING GARLIC & WALKING ONIONS

Discussion | Hands-On | Registration Required | Led by Jennifer Fane



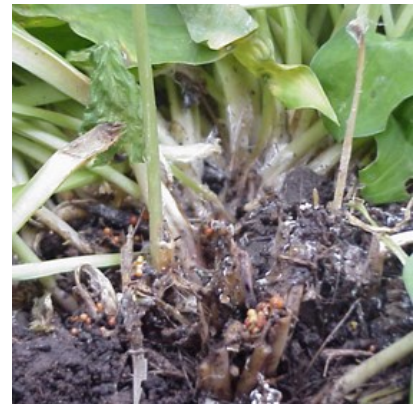
# March 2024: Warming Wisconsin Weather

[MARCH 27, 2024 HUDELSON](#)

I've been pretty amazed by the recent temperatures in Wisconsin. Here in Madison, we hit 70°F in late February. There have been some colder days this winter, but in general temperatures have been warmer than I remember, particularly compared to what I recall from when I moved to Madison in the mid-1970s. The warm winter of 2023-2024 followed an extraordinarily warm and dry summer in 2023. In the context of our warmer weather trends, I've been trying to think of how plant diseases might be impacted. Three diseases come to mind that likely could be more problematic in the coming years if warmer conditions continue.

## Southern blight

This disease is by far the most destructive fungal disease that I see in home landscapes. The fungus that causes Southern blight (*Athelia rolfsii*) has a wide host range, and virtually any herbaceous plant in the path of this fungus is likely to be killed. The fungus can also kill small trees under the right conditions. The first time I encountered Southern blight was about 20 years ago when it popped up in a flowerbed at the Allen Centennial Garden. By the time I visited the garden to make a diagnosis, the fungus had killed off every plant in about a 40 square foot area. As I examined the dead plants, I noted characteristic sclerotia (i.e., resting structures) of the fungus (they look like Osmocote® pellets) all over the bases of the dead plants and in a layer across the mulch in the bed.



Early in my diagnostic career (i.e., the late 1990s), I occasionally saw Southern blight in Wisconsin. However, because the pathogen is adapted to tropical and sub-tropical climates, it did not survive the harsh Wisconsin winters at that time. Extended periods where high temperatures were in the negative digits were common, and these temperatures killed the fungus. Nowadays, with our relatively mild winters, *A. rolfsii* seems to be better able to overwinter in the state. That's a huge problem because the fungus is easily moved around (via those pesky sclerotia), and if it is not killed by cold weather, then there is increased risk of spread and subsequent wholesale plant destruction.

## Oak wilt

Oak wilt has been present in Wisconsin for the entirety of my diagnostic career, and I have watched the Wisconsin Department of Natural Resources map its spread in the state over the

years. Historically in Wisconsin, sap beetles have moved the oak wilt fungus (*Bretziella fagacearum*) from location to location. These insects are attracted to wounded trees and drop off *B. fagacearum* as they feed on sap in the wounds. The fungus infects, leading to blockages of a tree's water-conducting tissue, subsequent branch dieback, and eventual tree death. Once an oak tree is infected, *B. fagacearum* can move to nearby oak trees through root grafts.

I am concerned that our warming weather pattern could contribute to increased risk for oak wilt in a couple of ways. Warmer summer temperatures are often associated with an increase the frequency and severity of summer storms. More (and more violent) storms increase the risk of damaged oak trees, which increases the risk of sap beetles visiting these trees and dropping off the oak wilt fungus. In addition, sap beetles are not the only insect that can move the oak wilt fungus around. Certain oak bark beetles have been documented to move the fungus as well. These bark beetles have traditionally had a more southern native range and have not been found extensively in Wisconsin. However, PJ Liesch, the UW-Madison insect diagnostician, recently commented to me that *Pseudopityophthorus minutissimus* (one of the oak bark beetles involved in transmission of the oak wilt fungus) has been very abundant in Wisconsin over the last few years. He's seen lots of this insect in oak samples that have come into his lab. How important oak bark beetles are in transmitting *Bretziella fagacearum* in Wisconsin at this time is not known. However, they will likely become increasingly important as they become more established and abundant in the state.

### Thousand cankers disease

This fungal disease of black walnut trees has not been reported in Wisconsin to date; the closest state with confirmed reports is Indiana. Efforts to prevent the introduction of the pathogen (*Geosmithia morbida*) into Wisconsin currently involve limiting importation of raw walnut wood into the state. The hope is to prevent introduction of *G. morbida*, as well as the walnut twig beetle (*Pityophthorus juglandis*). This insect moves the thousand cankers disease fungus from tree to tree. *P. juglandis* is native to Arizona, California, and New Mexico, but in the last decade or so has been introduced into states east of the Mississippi River (e.g., Indiana, Ohio, Tennessee). While movement of walnut wood currently poses the greatest threat for introduction of *G. morbida* and *P. juglandis* into Wisconsin, milder long-term weather patterns open up the possibility of eventual natural spread of *P. juglandis* (carrying *G. morbida*) into the state. I think it's only a matter of time before thousand cankers disease pops up in Wisconsin.

As our long-term weather pattern changes, I'll be on the lookout for new diseases and changes in established diseases in Wisconsin. I suggest that you watch your own gardens and landscapes for new diseases that you have not encountered in the past. You'll likely see changes. If you'd like help in identifying your new finds, feel free to contact the PDDC for help. Check out the clinic website at <https://pddc.wisc.edu> for details on sample submission, or call (608) 262-2863 or email [pddc@wisc.edu](mailto:pddc@wisc.edu) for advice and guidance. To keep up to date on clinic activities and resources, follow the PDDC on Facebook or Twitter (@UWPDDC), or subscribe to the clinic's listserv, UWPDDCLearn (by emailing or phoning the clinic to subscribe).

Happy spring and happy disease hunting, everyone!

Brian Hudelson



# Spring Planting Road Trip

Celebrate spring with a little tour of Clark County Greenhouses, just North of Marshfield

## POSEY PATCH GREENHOUSE & GIFTS

## TURN PIKE GREENHOUSE

We're planning to visit these two greenhouses, but there are many more on our circle tour that you can visit. Both greenhouses will have **coffee and cookies** waiting for us when we arrive. Posey Patch has offered us **10% off greenhouse and gift shop purchases**.

**Lunch** will be in Abbotsford. After lunch, we'll head back to Marshfield, stopping first at

## THINGS THAT GROW GREENHOUSE

**Wednesday, May 8.**

**Car pool/caravan** leaving from the **Wisconsin Rapids YMCA parking lot** (across from WRPD) at 7:30 am. We'll have a stop at **Weber Farm Store** for a break and meet with North Wood County friends. Departing at 8:30 am. Returning to Marshfield and Wisconsin Rapids on your timetable after lunch.

Hope you can join us. **Bring a friend!** Contact Chris Grimes for questions.



### Summer Fun 2024

Our Social Committee has planned some great outings for 2024! Hope you can join us for one or more. Feel free to invite a friend! Here's a head's Up. More information coming in monthly newsletters.

**April 20** Tea & Tulips at South Wood County Historical Museum in Wisconsin Rapids. Enjoy refreshments, visiting with fellow gardeners and listening to Janell Wehr's educational presentation.

**May 8** Road Trip to Clark County Greenhouses. Plant shopping and lunch. What could be better?

**June 11** Tour of Jurustic Park and Mrs. Wynia's art studio, followed by lunch. Later Urban's Greenhouse in Rudolph will host a succulent planting workshop just for us. Bring your own container to make your own creation.

August/ September plans TBA



## The WIMGA Corner with Karleen Remington

A reminder that the last Zoom continuing education program sponsored by WIMGA (Wisconsin Master Gardener Association) before the gardening season arrives is **Adaptive Gardening with Mark Dwyer on April 11 at 6:30**. Mark will focus on adaptations we can make so gardening is easier on our bodies. Additionally he will discuss modifications to our gardens that will also help. You will soon receive an e-mail from WIMGA with more details and the Zoom connection. The program will most likely be stored on the WIMGA website for some time afterward in case you miss the April presentation.

**Is there anyone in WCMGV who has not completed Onboarding Lite?** If so, you need to access this Wisconsin Master Gardener program orientation and complete it before you can record your volunteer hours in ORS (Online Reporting System). The WIMGA website has a feature on the home page titled **Instructions to Access Onboarding Lite**. Click on it and you will be guided screen by screen on the steps to take to get to the site.

For everyone else, it's a good idea to check the **Onboarding Lite for 2024** using the same process as mentioned above. There are a couple of new modules or segments that you are asked to look at. One is titled **As a Master Gardener** and deals with some basic thoughts on unintended bias, research based horticulture and trustworthy resources to use for information. There are also updated resources and checklists in the **What Counts and How to Count It** section/module. The time you spend reviewing Onboarding Lite can count toward your ORS continuing education record.

## Project Updates

The following organizations in the ORS host MG projects that would welcome help in 2024. Please refer to the member roster in the **Members Only** section of our website for project leader contact information.

**Lester Library of Rome:** Work Day every Wednesday 9am-noon; also at gardener's convenience. Contact Project leader Deb Rokke for orientation or task list.

**South Wood County Historical Museum Garden:** WisRapid Work day on Wednesday afternoons or the gardener's convenience. Contact Micky Erickson for orientation and task list. Watch for information about help to renovate the Hosta bed this Spring.

**WR Growing Friends Community Garden:** WR. Work times arranged weekly with gardeners' schedules. Contact Bea Kohl

**Edgewater Sensory Garden:** Port Edwards. Workdays generally Monday mornings, starting about 9am, as well as other times as needed. First help needed is planting annuals in preparation for Memorial Day. Contact Judy Miller

**Marshfield Fairgrounds MG Garden:** Marshfield. Group work day generally Tues or Thurs morning or evening. Gardener's convenience with consultation with leader. Contact Jill Becker

**Wildwood Zoo:** Marshfield. No scheduled work days. Contact Kathy Poehnelt or Sally Sadowska for orientation and task list.

**Marshfield Growing Together Community Garden:** Looking for people to join their Steering Committee, which meets monthly on Zoom. Watch for info on their Spring "Build Day". Marshfield contact Donna Streiff or Carolyn Schulein

**Nekoosa Market Street Planters:** Need help with weekly watering during the summer. Contact Diane or Jim Nickel

**Marshfield Public Library** To help with "Garden Guru" programming (in person and zoom), contact Donna Streiff

**Village of Rudolph** Contact Lynn Bushmaker to help with Main Street Planters and Welcome Signs.

# Project Updates

## Garden Walk 2024 Update



In late January, one of our garden walk hosts stepped away from participating in the walk for health reasons. With 6 beautiful gardens left to show and an energetic team behind the planning, we are still on target for putting on a sensational show.

### Something Old

Much of the 2024 garden walk will be familiar to you this year. Most years we hosted 6 gardens, so we are there. Tickets will be

available in advance of the walk and on walk day at each garden. We have secured unique artists who will display their artistry and have things for sale. Music will be incorporated in 2-3 of the gardens, enhancing the views with soft melodies. A raffle and silent auction are planned with awesome opportunities for lucky shoppers. In-line with our goals as an organization, horticultural education is being planned.

### Something New

Ticket costs will be \$10 in advance, \$12 day of walk. After more than 15 years we felt it appropriate to raise the price as expenses have increased and we are staying aligned with neighboring counties and garden clubs.

Our brochure/garden ticket will now be printed in color! It will include a map; pictures of the gardens, and list all the sponsors who are helping cover the cost of some of the changes being made this year.

A harpist, keyboardist, flutist, & pan drums are new. Yummy baked items are planned. All these will enhance your garden-walk experience.

Two of our host gardeners plan to share some "how-tos" with the public – attracting and raising butterflies, growing & dividing succulents

All gardens will feature labeled plants. See something you like, want to have in your garden? Not sure what it is? The garden walk team is supporting gardeners by labeling perennials, annuals, unique shrubs and trees. Labels will support WCMGs, as well, who are fewer in number this year to address inquiries.

Host gifts. Traditionally, garden hosts received beautiful garden stones, crafted by Famia- much work done by one. This year a volunteer team will assist her, and additionally create a stone for the silent auction. We look forward to seeing the results.

### Something Borrowed

We located plant stakes among our stash of MG supplies at the courthouse and will utilize them in the walk but more are needed. Garden stakes/labels will be reused for future walks.

We hoped to utilize signs that were used in prior garden walks, but signage/advertising requirements have changed in 4 years. City and county rules are being researched to assure our compliance during the walk-more on this in the future.

### Something Blue?

Honestly, we are not feeling "blue" at all, but excited. Watch for fun advertising on the WCMG Facebook page; like & share with all Facebook connections. Additional promotions are planned with local newspapers, marquees, community media (radio, channel 3) and Wausau News Channel 7. Posters and save the dates will be available in April. We encourage all MG to distribute these to help us reach a wider audience.

Stay tuned! Your Garden Walk Committee

# Project Updates

## A simple 2024 Spring Plant sale will take place.

Our goal is to:

- Continue a relationship with the Port Edwards Rummage sale.
- Primary sales will come from the over 100 plus plants leftover from the fall sale, plus, nursery grown vegetable starter plants, and those plants members have raised for this sale. We also have bulbs, and seed packets. (see note)
- Any profit we make is a benefit towards expenses for the garden walk, gardening projects, etc.



**DATE: May 18<sup>th</sup>, Saturday** – WCMG Spring Plant Sale  
Arrive at 7:30am. Sale 8am to 5pm

**Location:** At Cathy Schutz's place in Port Edwards.  
Thank you, Cathy!!

**Set-up:** Friday May 17<sup>th</sup> – Start at 9am until finish.

We will be offering multiple community drop-off sites the week of the sale.

More details are on the sign-up sheet passed around in the March membership meeting and will be released to you in other means.

Here's what we have in mind so you can plan to participate as you are able.

- We encourage MG and friends of MG to plant seeds to have marketable annual flowers and vegetables for [this sale](#). Also perennials, native plants, succulents in potting mix.
- We can accept divided and replanted houseplants in sterilized potting mix. (Based on the plant size consider selling it as a larger plant at the Sept 14<sup>th</sup> – 15<sup>th</sup> Fall plant sale.)
- Tender bulbs/rhizomes cleaned and planted in sterilized soil/pots.
- Packets of viable seeds or collected seeds/native seeds in sealed envelopes with plant information.
- Any other donations related to a spring plant sale, clean and usable. (Note no rummage sale on site).

We will also have Garden Walk tickets for sale, a "Ask a Master Gardener" booth for the day, and possibly a bake sale. Last year we collected \$262 at this table.

Stay tuned for more information as the winter progresses to Spring.

Members have the freedom to opt out of the spring sale this year because of their involvement with the garden walk etc. We **do need** your product support for the fall sale.

Submitted by Jill Becker and Bea Kohl

# Project Updates

## 2024 Spring Plant Sale sign-up

Note: We plan on group pricing of plants and products to reduce set-up time. We are not planning on offering the usual number of garden-related items. Of course, if these are donated, we will sell or save them for the fall sale. Primary items for sale are bulbs, plants, and seeds.

### Pre-Sale

April – Jill and Micky To select what starter vegetables plants we want from Tender Shoots

### The Week of May 12-18<sup>th</sup>

Volunteer as a drop-off site: Marshfield – Jill B, Nekoosa \_\_\_\_\_, Port Edwards-Cathy Schutz, Rudolph-Ann Rozner, and WI Rapids \_\_\_\_\_. Evening of the 16<sup>th</sup> by 6pm drop off at the SWCHM, South Wood County Historical Museum, WI Rapids-Micky Erickson.

1-2 people – To pick-up plants from Tender Shoots, Greenwood, WI. Jill and \_\_\_\_\_.

2 people - To pick-up and/ or return equipment from Rudolph to P.Edwards. Jill and Lil Schotten.

1-2 people – Thursday or Friday put out plant sale street signs.-Stacy Musch \_\_\_\_\_.

### Friday, May 17<sup>th</sup> Set-up

9 to 12 people-Cathy Schutz, Kay Paulson, Deb Rokke, Karen Shirek, Jill Becker \_\_\_\_\_

---

### Saturday, May 18<sup>th</sup> Sale Staffing needs each day/am &/or pm shift:

- 1 New idea - Greeter (Welcomes, tally & hands out business card) Teka Siebenaler
  - 1-2 Members in the Ask a Master Gardener's booth. \_\_\_\_\_
  - 2 –3 Members at the check-out, if we go with a Bake sale will need a third person-Deb Rokke, Karen Shirek, Jill Becker
  - 1-2 Members selling **Garden Walk Tickets**-Lil Schotten \_\_\_\_\_
- (Ticket sales could be a separate table and/or combined with check-out or bake sale)**
- 3-6 People assist shoppers with vegetables starter, natives, other plants and 1-2 more assisting shoppers or consolidating products-Cathy Schutz, Ann Rozner, Micky Erickson
- 

1-2 Floater to give others breaks or help at busy areas.

---

= 9-15 Total personnel needed on sale day, May 18<sup>th</sup>.

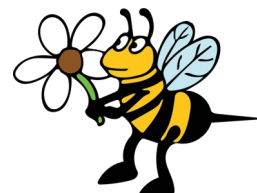
### Clean up, same day – Saturday May 18<sup>th</sup>

9 to 12 people. . Cathy Schutz, Micky Erickson, Jill Becker \_\_\_\_\_

### **More information on Fall Plant Sale on next page**



## Fall Plant Sale Buzz



### Things To Do Now

- • Look for sales on potting soils and let others know.
- • Donate 4-, 5- and 6-inch pots. Members doing winter sowing / propagations can always use them. We are trying to use uniform size pots to make sale pricing easier.
- • Check on overwintering plants. With our goofy winter weather, you may need to water during warm dry spells to keep the soil from drying out. (Yes, watering in February/March may be necessary this year!!)
- • Look for interesting seed heads for fall arrangements.
- • Have you planned to add plants that have interesting seed heads for dry arrangements to your garden design this year? If so, start to think about starting seeds or shopping around for plants soon. See the 2023 September newsletter for a list of possible choices.
- • Continue to propagate houseplants now that growth starts picking up in spring.

## Calendar of Events

**April 11 WIMGA Educational Program**

**April 15 Garden Guru**

**April 20 Tea and Tulips with program by Janell Wehr**

**April 23 Meeting with program by Matt Vollrath**

**May 18 Spring Plant Sale**

**July 20 Garden Walk**

**August 20-25 Central Wisconsin State Fair**

**September 13-15 Fall Plant Sale**

**Wood County Clean Sweep**

**May 25 at Marshfield Ag Station**

**September 7 at Saratoga Town Hall**



# April Garden Guide

Taken from Portage County Master Gardeners website

- Start tomato seeds indoors. Research shows seven-week old transplants produce earliest fruit and best overall results.

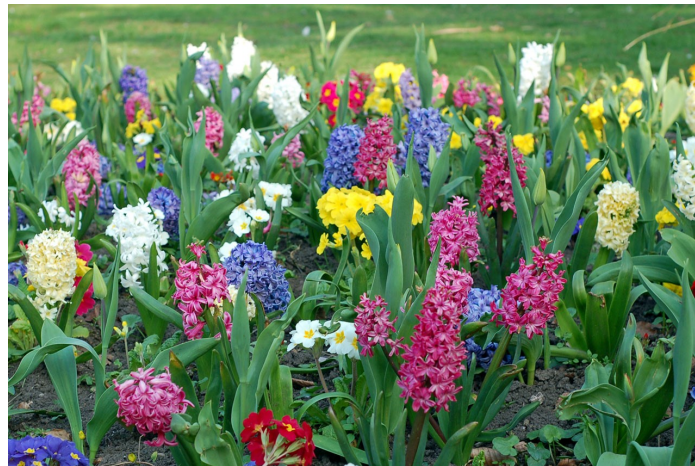
- Cut back over-wintered geraniums to six to eight inches.

- Start fast-growing annual flowers indoors.

- Start seedlings of eggplant, okra, peppers and broccoli.

- Set out lily of the valley clumps with pips just even with the ground.

- When annual beds can be worked, turn over green manure crop such as annual rye in beds for annuals and vegetables. If none was planted, top-dress with compost or rotted manure.



- Remove mulch from spring flowering bulb beds.

- Container grown or balled and bur lapped trees and shrubs can be planted at any time during the growing season.

- Divide perennials by the end of the month. This will provide roots time to get established.

- Prune and fertilize all bush

fruits and grapes. Fertilize fruit trees as soon as possible after ground thaws but before blossoming.

- Plant rhubarb and asparagus as soon as ground can be worked.

- Remove rose cones when soil thaws. Gradually remove soil mound from around rose plants.

## 2024 WCMGV BOARD OF DIRECTORS

**President—Chris Grimes**  
715-424-2878

**Vice President—OPEN**

**Secretary—Judy Miller**  
715-572-4798

**Treasurer—Famia Marx**  
715-652-2405

**Director—Jill Becker**  
715-387-8040

**Director—Lil Schotten**  
715-213-7672

**Director—Bea Kohl**  
715-423-8908

**Director—Carolyn Schulein**  
715-389-9027

**Communications Rep.—**  
**Chris Grimes**  
715-424-2878

**WIMGA Rep—**  
**Karleen Remington**  
715-387-1863

**Newsletter Editor—Donna**  
**Streiff**  
715-207-6218

**Wood County Extension Horticultural Agent**  
**Janell Wehr** [janell.wehr@wisc.edu](mailto:janell.wehr@wisc.edu)

The Wood County Master Gardener Association is a non-profit organization with a mission to educate and share information with its members and the community alike. In addition, it is our charge to promote the UW Extension from which we are founded. We are a diverse group interested in the latest research-based horticultural information.

### Future Article Submissions

Please send items for inclusion in the newsletter by the 25th of the previous month to: [streiffonclay@tds.net](mailto:streiffonclay@tds.net)

Wisconsin Master Gardener Website:

<https://mastergardener.extension.wisc.edu/>

Wood County Extension Website:

<https://wood.extension.wisc.edu/>

Wood County Master Gardener Association Website:

<https://wood-county-master-gardeners.org/>

WIMGA Website:  
<https://www.wimga.org>

### Reminders

- If you need continuing education hours, see page 3
- Continue to start house plants, succulents, fairy gardens, etc. for plant sales
- Volunteer to work on one of our major projects—Plant Sale(s), Garden Walk, CWSF, possible new Library Summer Program.